

Annexation in Alberta: Beaumont's Story



Eleanor Mohammed, RPP, MCIP, EP

General Manager, Integrated Growth & Infrastructure

Beaumont, Alberta

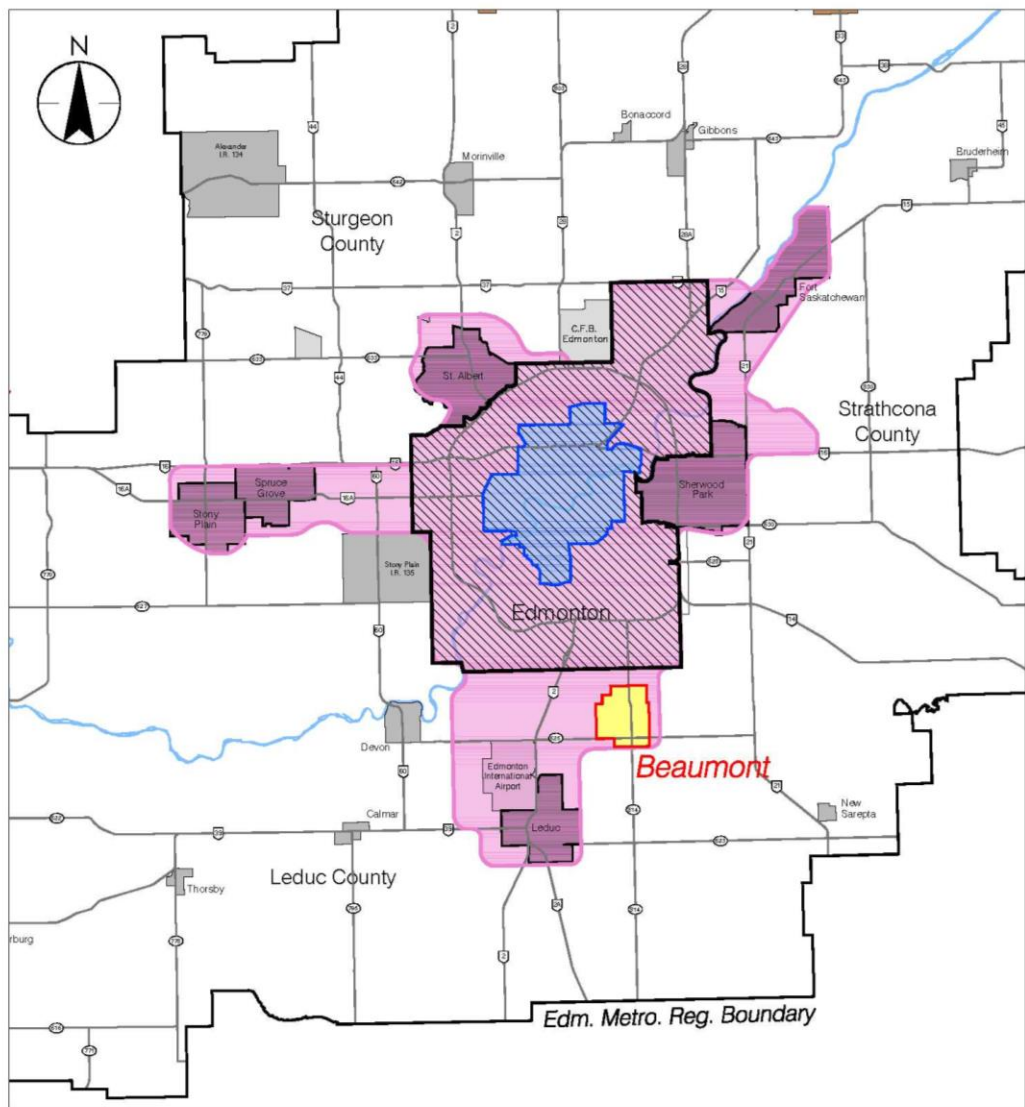
Land Use 2018 Conference

May 30, 2018

Outline

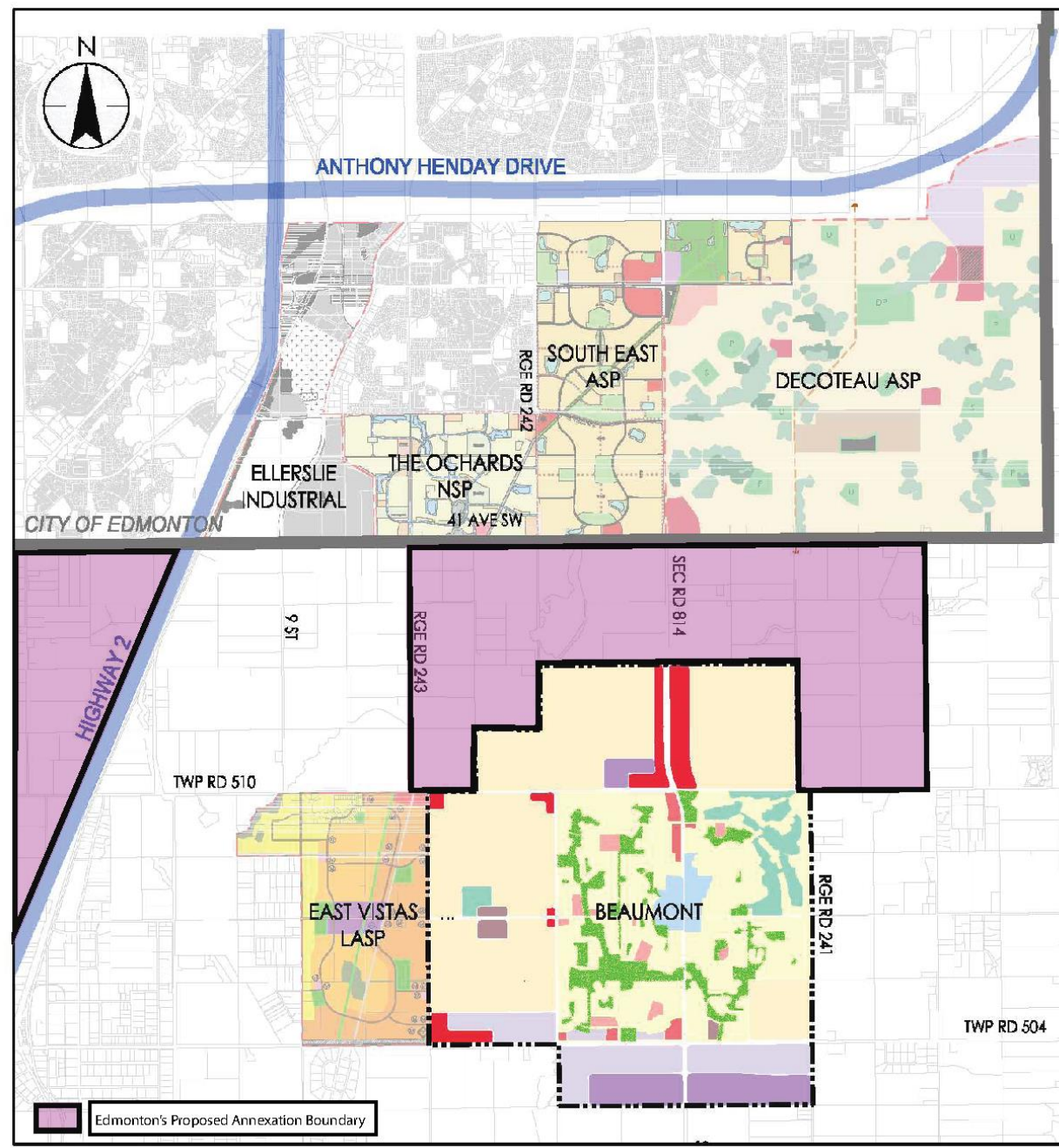
- The Beaumont context
- Why annexation?
- The responsibilities that come with an approved annexation
- The Valentine's Day Agreement





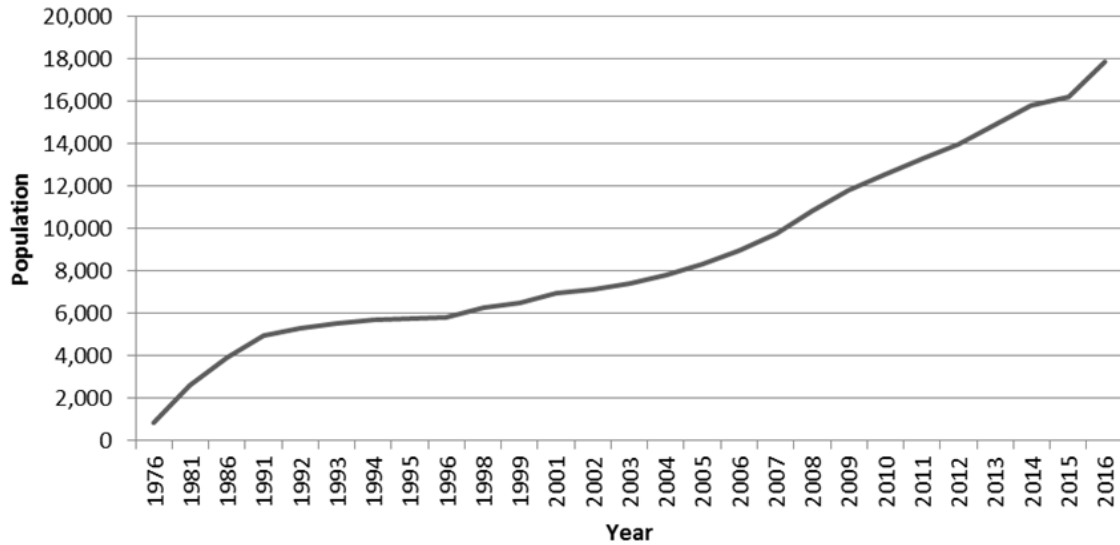
LEGEND

- METROPOLITAN CORE
- METROPOLITAN AREA
- CITY OF EDMONTON



Edmonton's Proposed Annexation Boundary

Historic Population in Beaumont

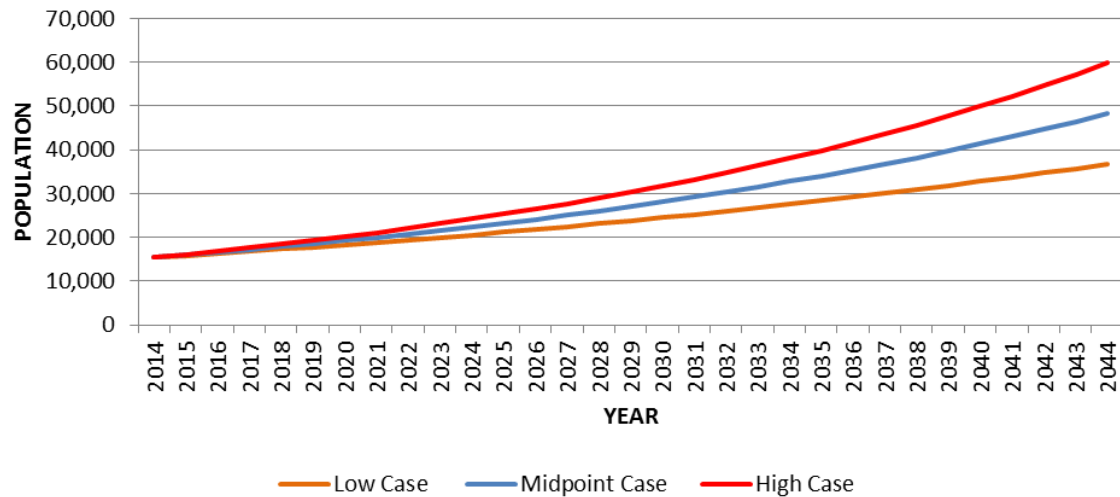


Between 1986 and 2016 Beaumont's population increased an average of 5.1% annually. The 2016 federal census ranked Beaumont as the fastest growing municipality in the Edmonton Metropolitan Region and the 5th fastest in Canada between 2011 and 2016 among municipalities within census metropolitan areas.



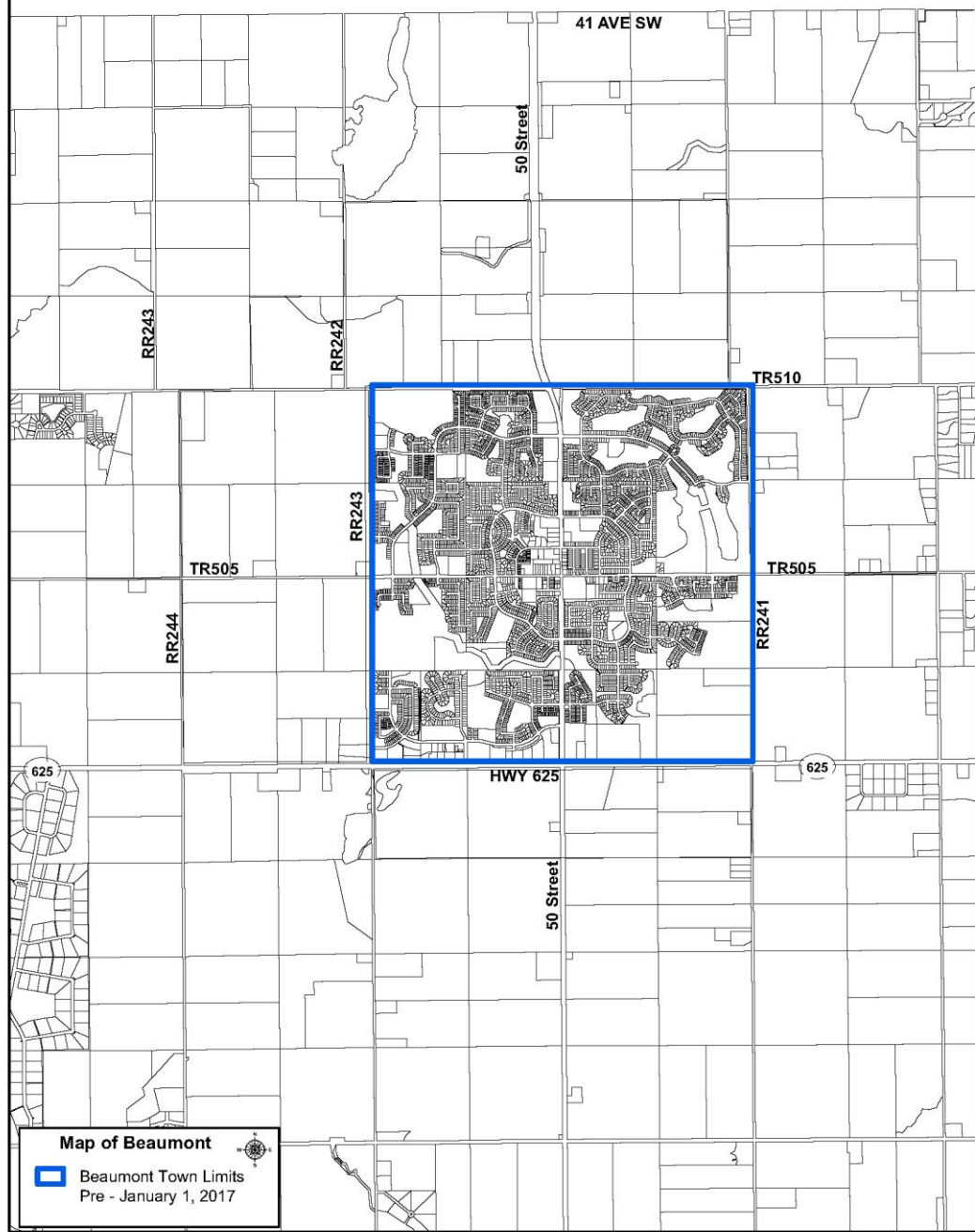
Beaumont's Population in 2017: 18,320

POPULATION PROJECTION YEAR 2014 - 2044

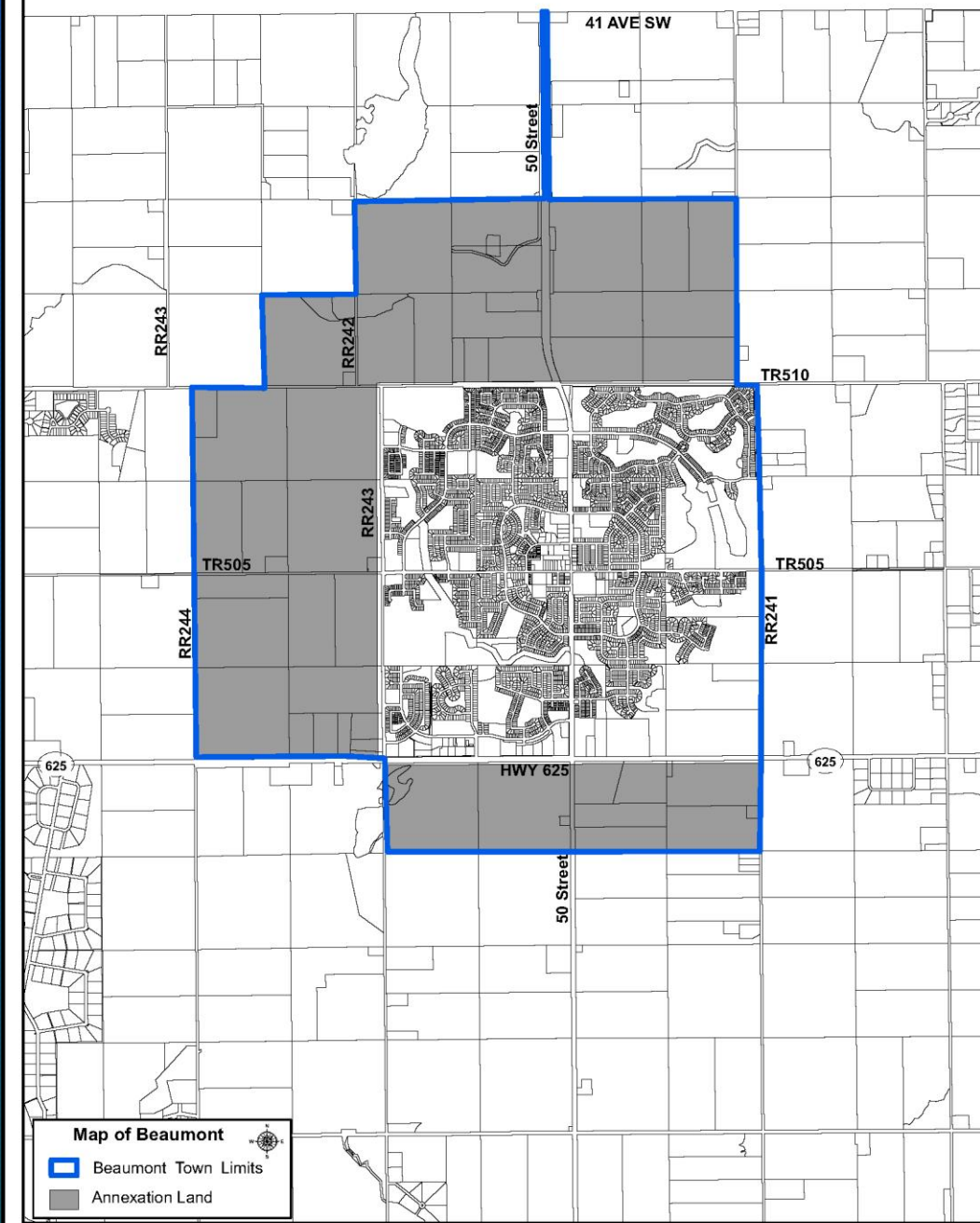


	Low Case Scenario	Midpoint Case Scenario	High Case Scenario
2016 Population	17,720	17,720	17,720
2044 Projected Population	36,800	48,300	59,800
Total Population Change	19,080	30,580	42,080
Average Annual Growth Rate	2.7%	3.8%	4.6%

City of Edmonton



City of Edmonton



The Process in Numbers: 2009 - 2016

2 Growth Studies (Beaumont and Leduc County Joint Sustainability Study & Beaumont Growth Study)

9 Steering Committee Meetings - Beaumont & Leduc County

17 mediated meetings - Beaumont & Leduc County

6 Public Events/Open Houses

4+ Meetings with the City of Edmonton

13 Days of Annexation Merit Hearings

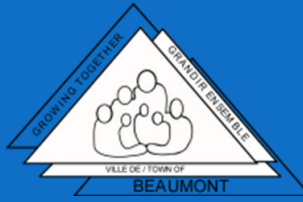
2013 Beaumont filed a *Notice of Intent to Annex 24* quarter sections

2014 Beaumont filed an amended *Notice of Intent to Annex 21 quarter sections* & made a formal application to the Municipal Government Board

2016 The province approves the requested annexation, to be effective January 1, 2017

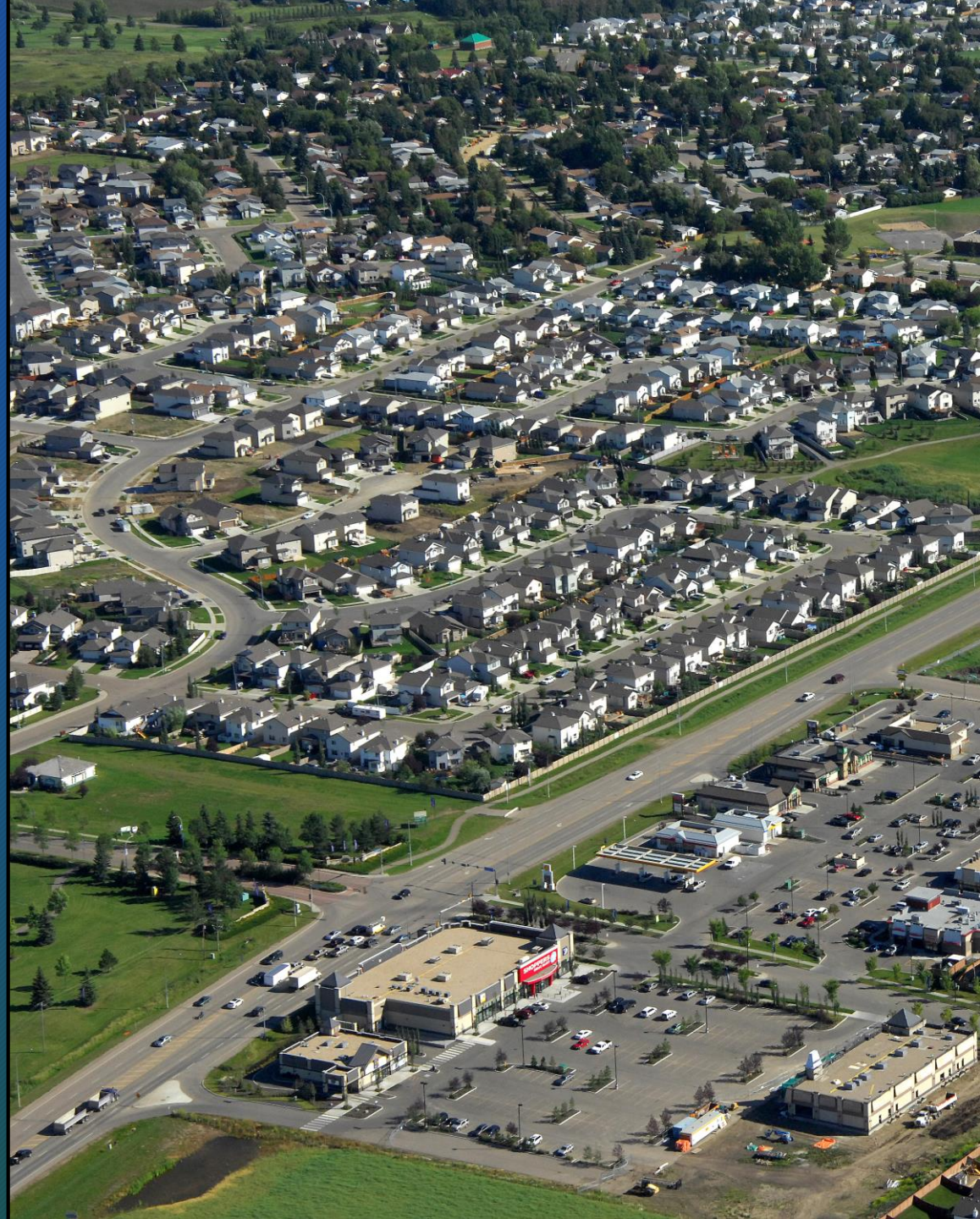
6,526 Beaumont's population increase between 2009 and 2016

Approximate cost of Beaumont's annexation:
\$1,000,000



With an approved annexation comes great responsibility.....

- Efficient use of land
- Working with the neighbours
- Servicing and Economic Development



Leduc County, City of Edmonton, & Beaumont Intermunicipal Framework Agreement



- Signed by the City of Edmonton, Leduc County, and Beaumont on February 13, 2018
- The Signatories have agreed to work together and develop high-level conceptual frameworks for:
 - Land Use Planning
 - Transportation and Servicing
 - Cost and Benefit Sharing
- A working group and oversight committee has been established to move the frameworks along.

Thank you



Eleanor Mohammed, RPP, MCIP, EP
General Manager, Integrated Growth & Infrastructure
Beaumont, Alberta
Eleanor.Mohammed@Beaumont.ab.ca
Office: 780.929.3323
Mobile: 780.224.1230