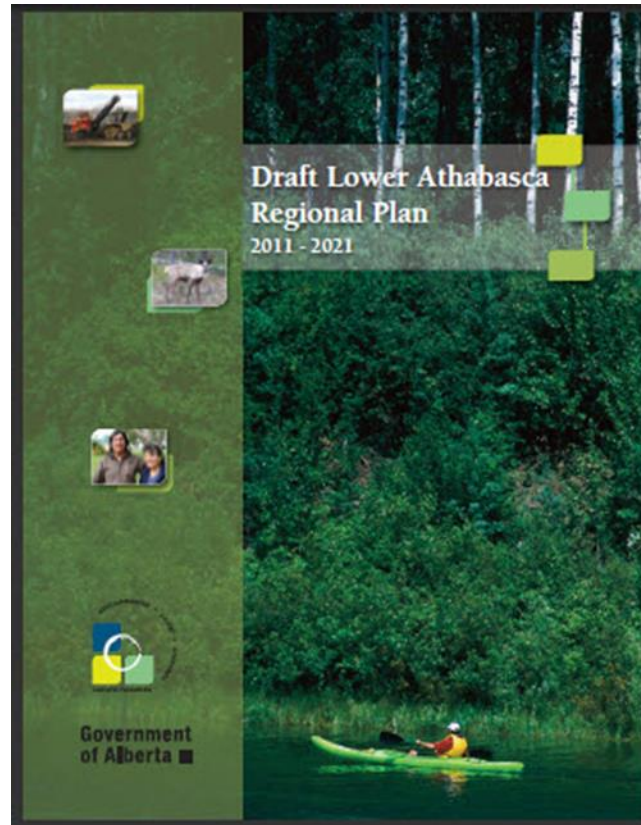


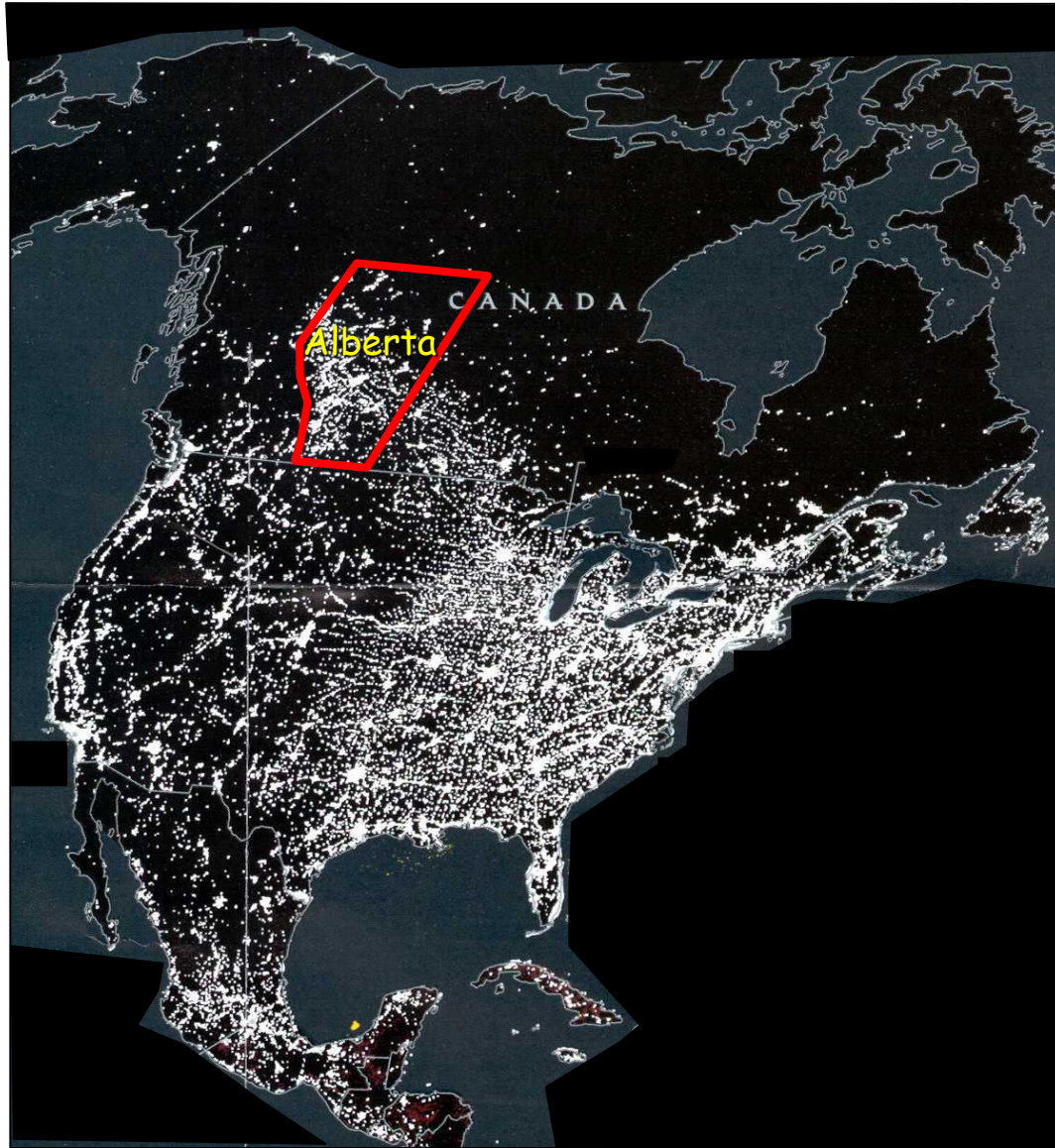
Report Card on the Land Use Framework



Presentation

- Rational for the Land Use Framework and Regional Planning
- LUF Strategies, Priority Actions, Addressing Policy Gaps
- Opportunities and Concerns

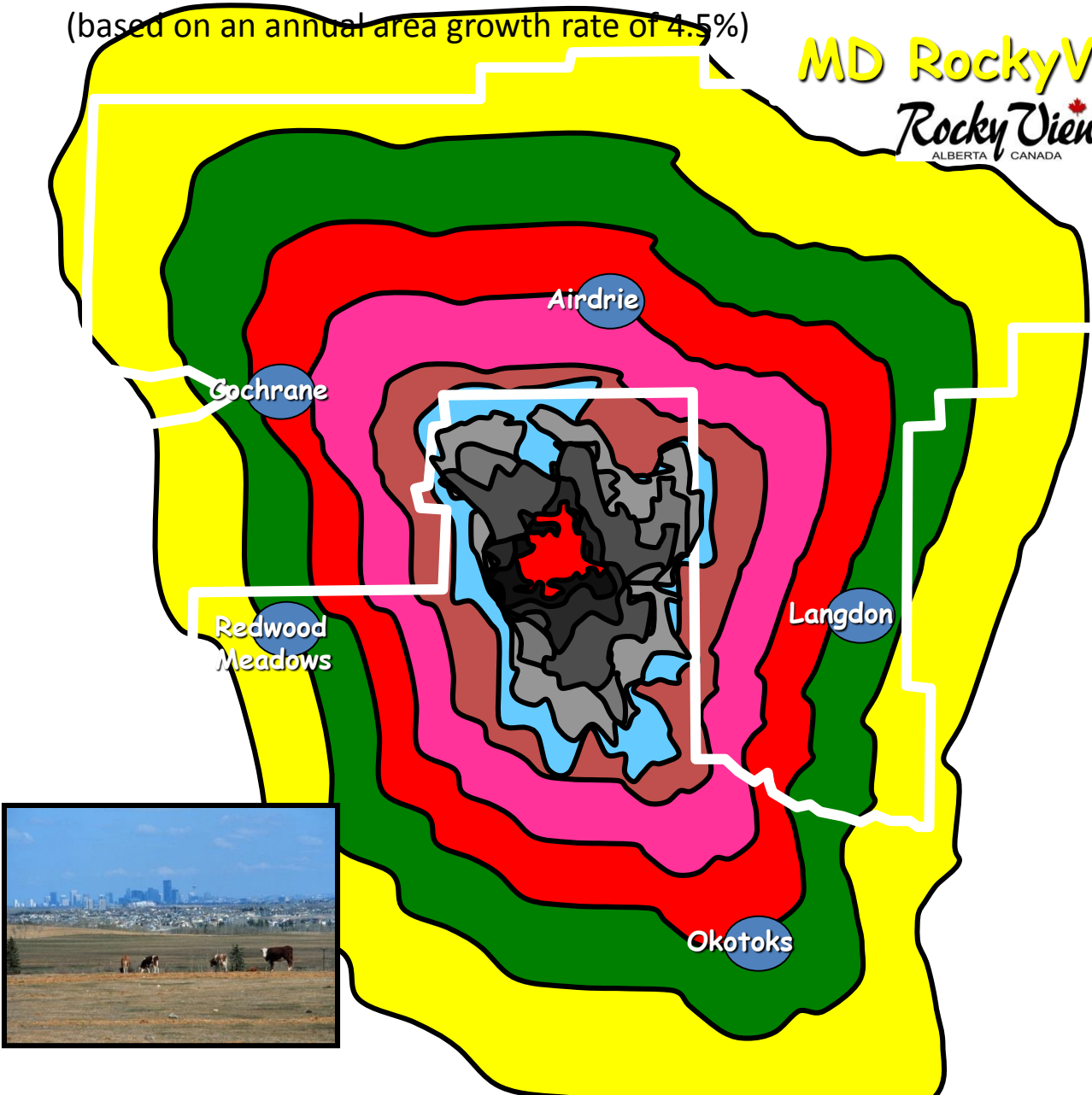
Source: International Dark Sky Organization; www.darksky.org



(based on an annual area growth rate of 4.5%)

MD RockyView
Rocky View
ALBERTA CANADA

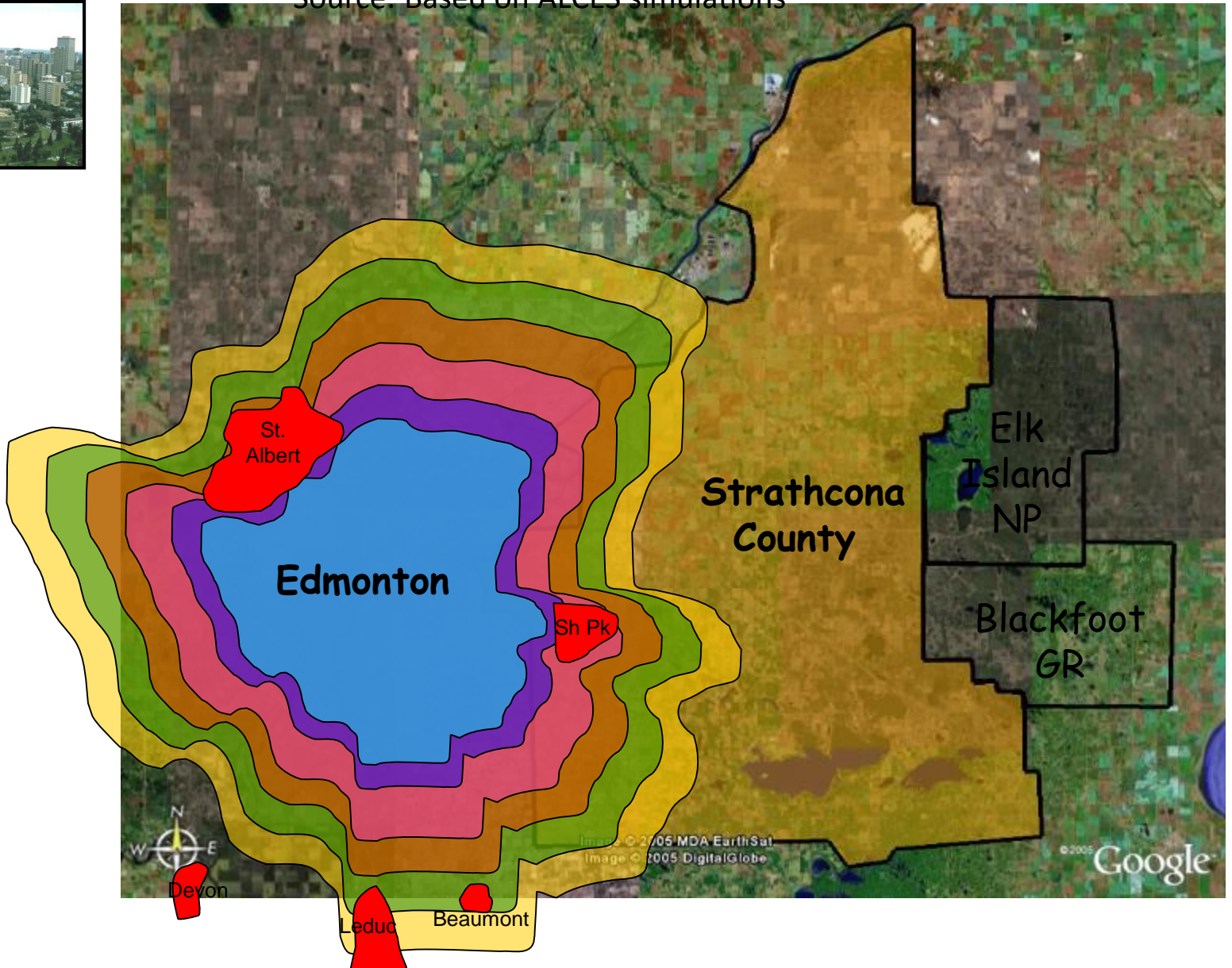
Historic	1924
	1949
	1957
	1969
	1976
	1989
	1998
Projected	2010
	2020
	2030
	2040
	2050

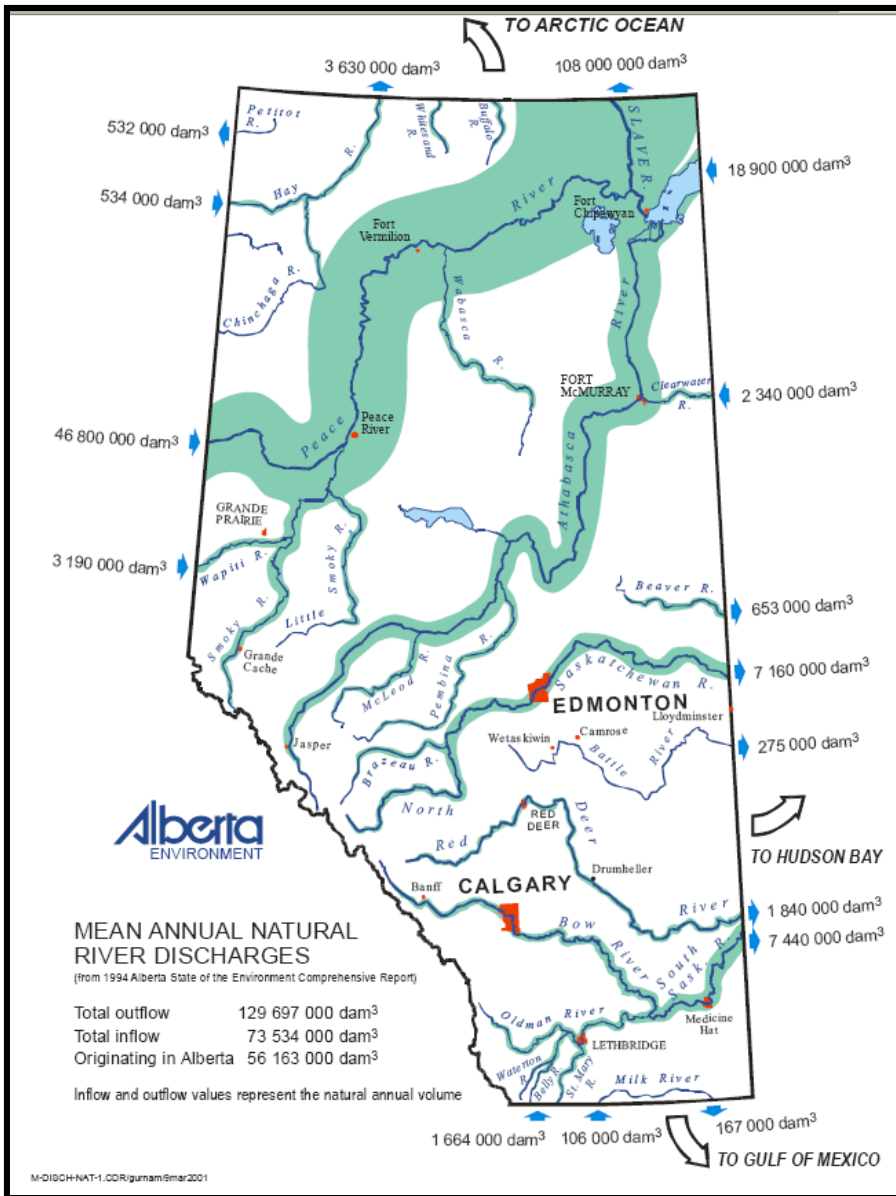


Source: Based on ALCES simulations

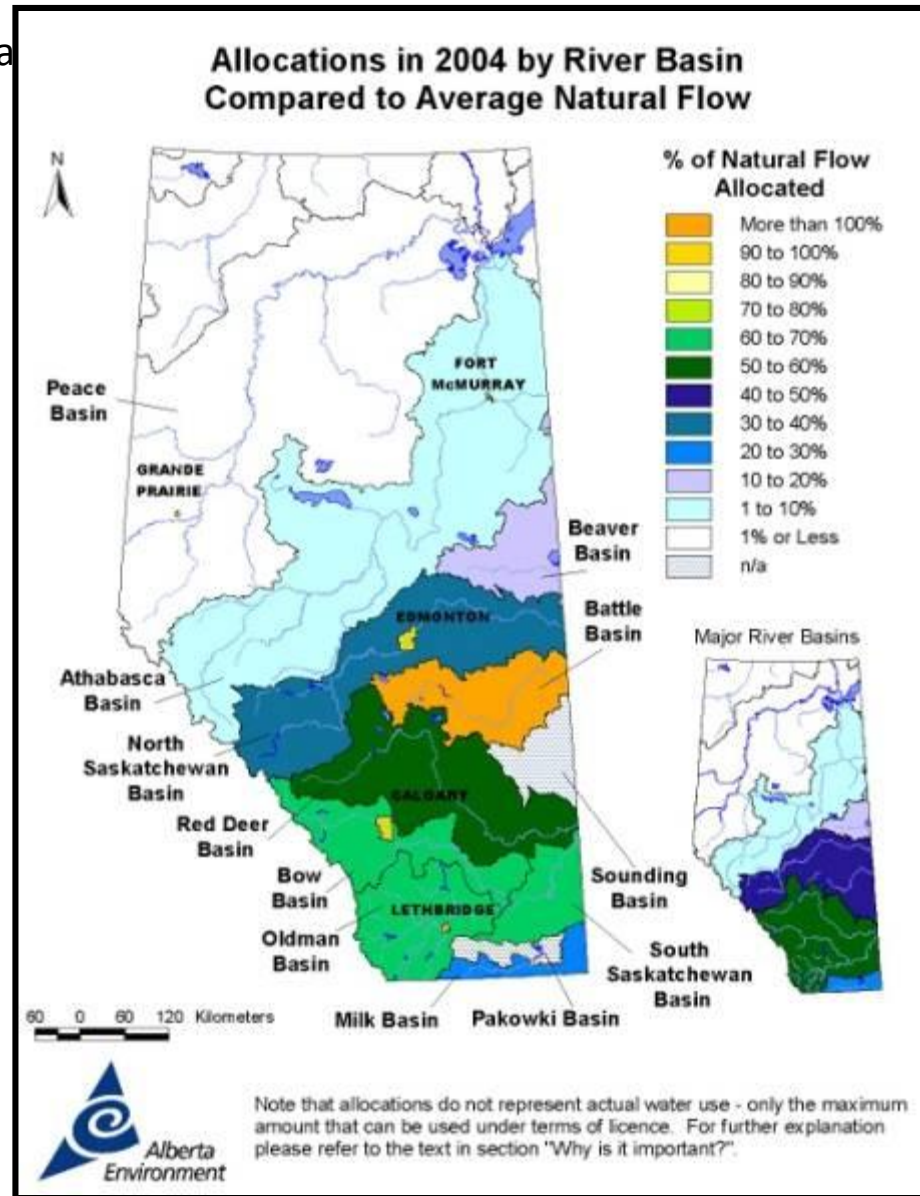


- 2005
- 2010
- 2020
- 2030
- 2040
- 2050

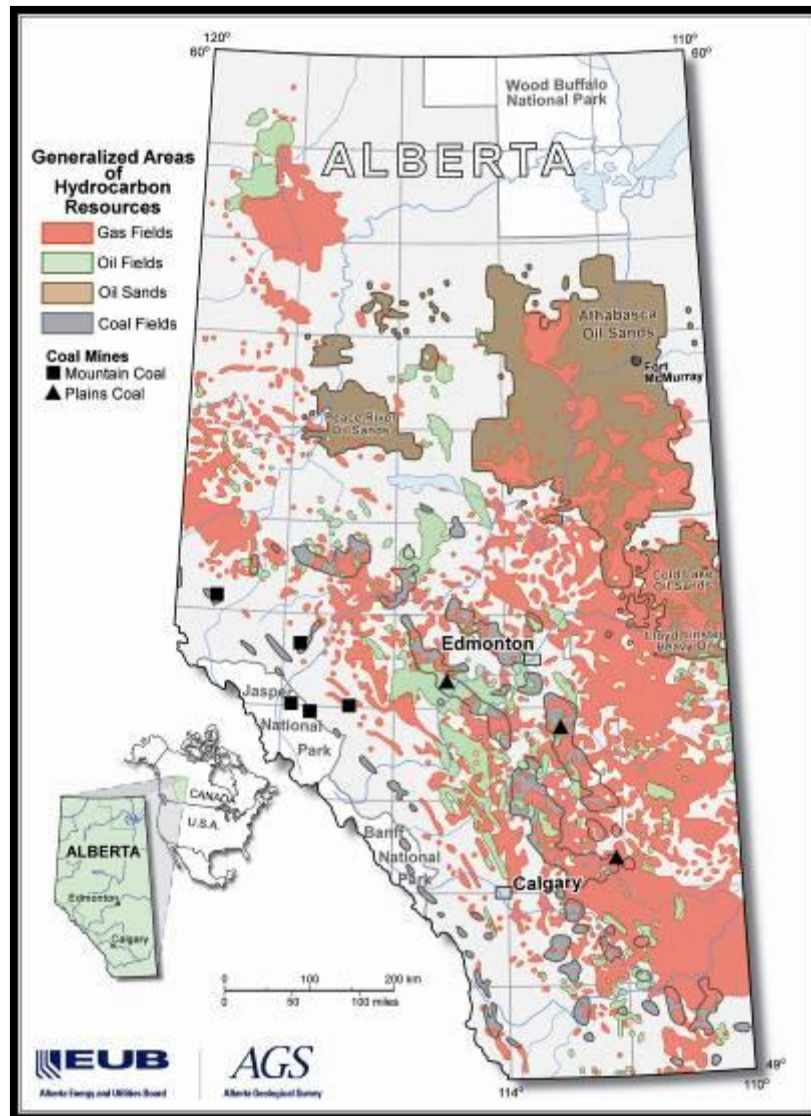




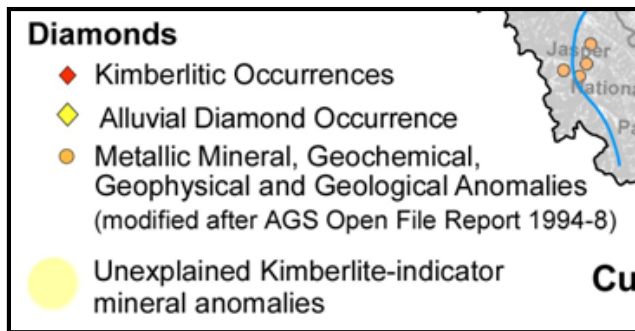
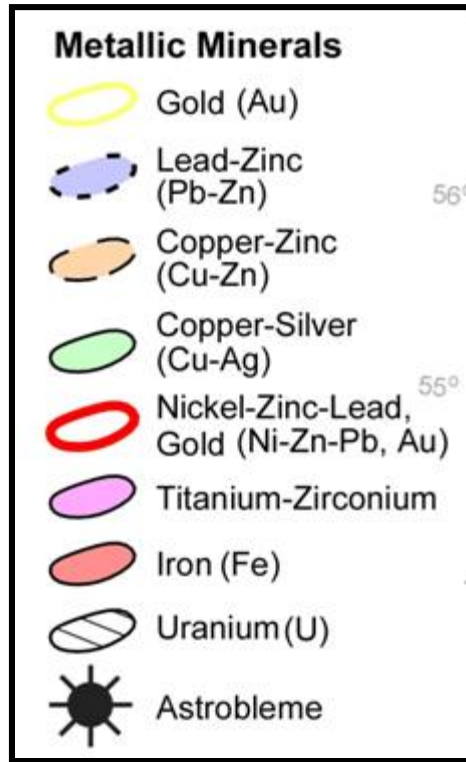
arta



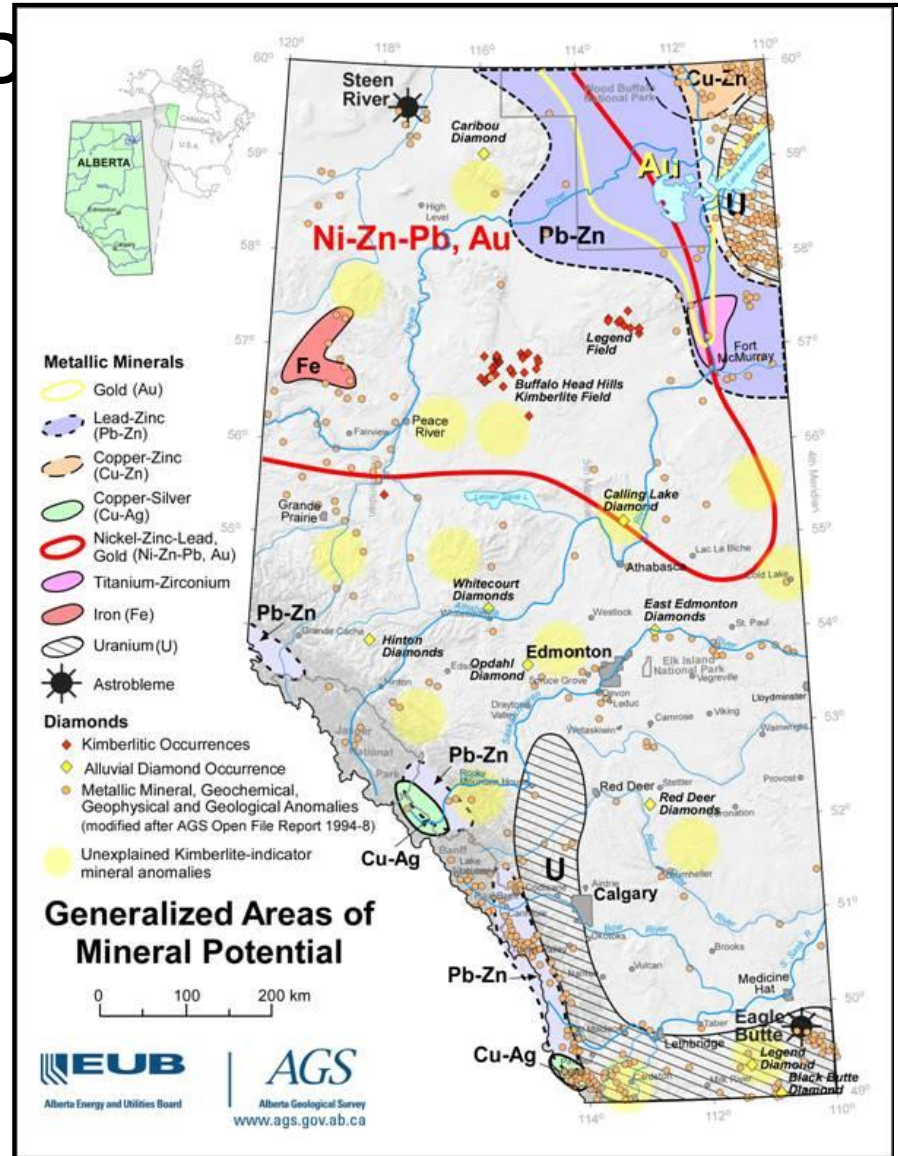
Source: Alberta Energy & Utilities Board; Alberta Geological Survey



Generalized Areas of Mineralized



Po



LUF Strategies

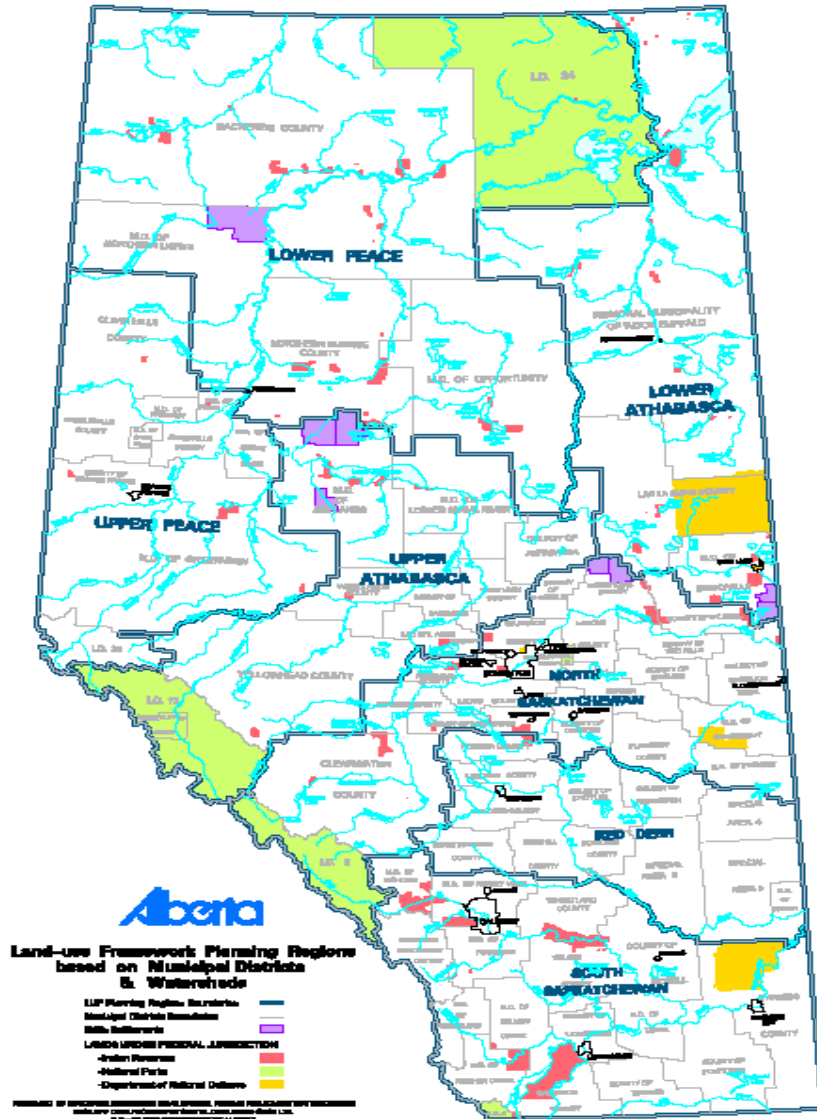
- **Strategy 1: Develop seven regional land-use plans that are congruent with the province's major watersheds and aligned with municipal boundaries.**
- **Strategy 2: Create a Land-use Secretariat and establish a Regional Advisory Council for each region**
- **Strategy 3: Cumulative effects management will be used at the regional level to manage the impacts of development on land, water and air**

LUF Strategies

- **Strategy 4: Develop a strategy for conservation and stewardship on private and public lands**
- **Strategy 5: Promote efficient use of land to reduce the footprint of human activities on Alberta's landscape**
- **Strategy 6: Establish an information, monitoring and knowledge system to contribute to continuous improvement of land-use planning and decision-making**
- **Strategy 7: Inclusion of aboriginal peoples in land-use planning**

Land-use Regions

- Lower Peace
- Upper Peace
- Lower Athabasca
- Upper Athabasca
- North Saskatchewan
- South Saskatchewan
- Red Deer



LUF Priorities

- **Legislation to Support the LUF**
- **Metropolitan Plans for the Capital and Calgary Regions**
- **Lower Athabasca and South Saskatchewan Regional Plans**

Addressing Policy Gaps

- **Managing Subsurface and Surface Activities**
- **Reducing the Fragmentation and Conversion of Agricultural Land**
- **Developing a Transportation and Utility Corridors Strategy**
- **Managing Recreational Use on Public lands**
- **Conserving and Protecting the Diversity of Alberta's Ecological Regions**
- **Managing Flood Risk**

Alberta Land Stewardship Act

- Proclaimed October 1, 2009
- Amendment of 27 Provincial Acts
- Lieutenant Governor in Council has authority to:
 - Align planning, policy and decision making with that direction
 - Requires officials under other Acts to follow direction in regional plans and implement under their legislation
 - eg. provincial departments, municipalities, boards (eg. (AER), AUB, NRCB, MGB)

Amended May 2011: Re Confirm Protection of Property Rights

Components of ALSA

PART 1 – Regional Plans - Making, Amending, Reviewing and Contents of Regional Plans

Gives the Lieutenant Governor authority to establish planning regions, how plans are consulted on, developed, reviewed, amended or rescinded.

PART 2- Nature and Effect of Regional Plans and Compliance Declarations

Defines the legal and binding nature of regional plans, provide provisions for variance from regional plans, and compensation .

PART 3 – Conservation and Stewardship Tools

Provides for 4 conservation and stewardship tools: Conservation Easements, Conservation Directives, Conservation Offsets and Transfer of Development Credits as well as the establishment of an exchange.

PART 4 – Regional Planning Process and its Administration

Gives the Lieutenant Governor authority to commence a regional plan, establish a Regional Advisory Council, establishes the Land Use Secretariat as well as other administrative matters)

PART 5 -Transitional Provisions, Related Amendments and Coming into Force

Provides for Conservation Easement transfer to the ALSA, amendments to 27 other Acts and coming into force.



Purpose of Regional Plans

- Define regional outcomes (economic, environmental and social) and a broad plan for land and natural resource use for public and private lands
- Align provincial strategies and policies at the regional level
- Determine specific trade-offs and appropriate land and natural resource management for specific landscapes within a region
- Define the cumulative effects management approach for the region and identify targets and thresholds

Regional Plan Structure

- **Strategic and Implementation Plan:**
 - Strategies and Actions that will be undertaken to support achieving the Vision and Outcomes and includes indicators to measure and evaluate progress. (Policy Direction - must be considered but not binding)
- **Regulatory Details Plan:**
 - Enables the achieving the strategic direction and strategies and actions. (must be considered and binding)

Opportunities

- Although the NDP lens may be different there still appears to be support
 - NDP Platform (5.12) We will strengthen environmental standards, inspection, monitoring and enforcement to protect Alberta's water, land and air. We will build standards based on independent science and international best practices, designed transparently in careful consultation with Albertans.
 - Undertaking the North Saskatchewan Region Plan is a commitment in AEP current Business Plan
 - Continuing to work on implementation of LARP and SSRP eg. Management Frameworks

Opportunities

- Less Pressure on the Land Base
- Cross stakeholder support is still there
- Resequencing of plans – eg. East Slopes priority

Concerns

- Dead Air
 - Last Progress Report Card for Regional Plans – 2013 – most commitments for 2014, 2015
 - RAC Advise on North Sask has been in Government hands for over a year and not released
 - People are assuming the process is dead, being replaced, etc.

Concerns

- Although Cross stakeholder support is still there, perception that a single (environmental) vs. a cross section of stakeholders is influencing
- Although ALSA provides the legislation underpinning, a number of policies/tools/strategies, etc. need to be developed.



Samuel Johnson

Great works are performed not by strength, but by perseverance.